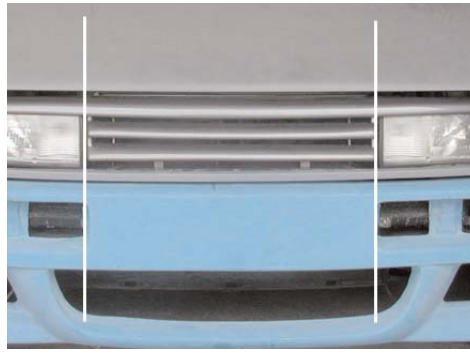


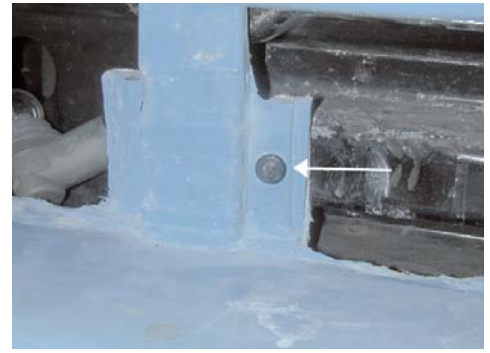
Corrado VR6/G60 Bumper Installation



To align the side of the bumper to sit flush with the fender, the sides of the bumper has to be pulled in about 1/4 inch. First, make a cut in the left and right corners of the bumper as shown.



Hold the bumper onto the car and center the bumper with the headlights as shown.. If the bumper doesn't go far back enough, shave off more fiberglass behind the fog/turns at the back of the bumper until it sits back enough.



Attach 2 screws into the fog/turn light mounting column to hold the bumper onto the rebar.



Second screw point. It can be any secure point.



Align the back of the bumper to be flush with the fender as shown.



Use a metal plate and screws to hold the position of the corner.



Add fiberglass to the back of the cut and clamp it in place. You will want to add a thick layer of fiberglass so that the joint will be strong, otherwise if there is flex it may eventually crack your paint once the bumper has been painted.



Once the fiberglass has harden, body filler the out side and sand smooth.



Prep and paint the bumper and reinstall.