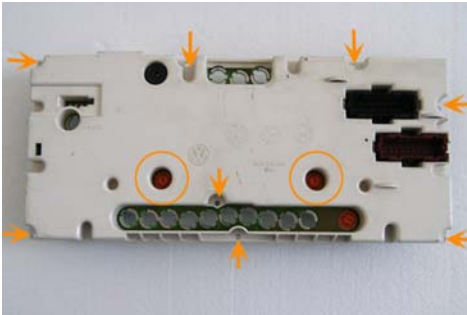
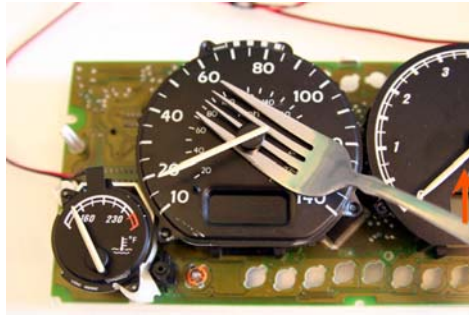


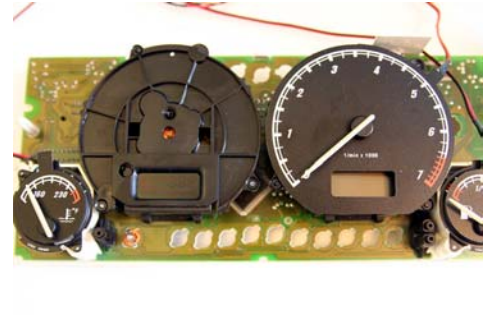
∴ MKIII GOLF GAUGES INSTALLATION



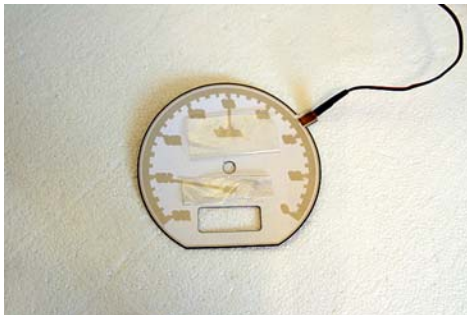
1. With the cluster removed from the dash, separate the front cover by removing the golden coloured screws at the back of the cluster as indicated by the arrows. The front cover can be now removed.



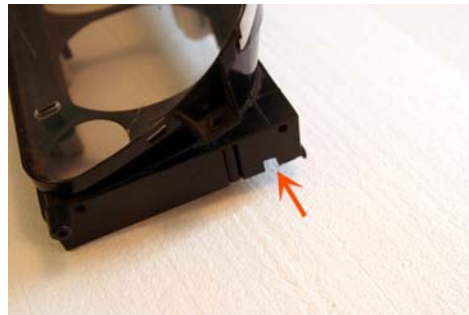
2. To install the gauges, first remove the needles. You can use a fork as your prying tool. Slowly lift up the fork as indicated by the arrow with controlled pressure until the needle pops free. For the two smaller needles just pull them up with your fingers.



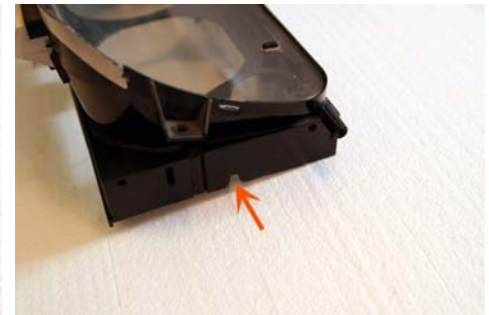
3. Remove the speedometer and tachometer metal faces by prying them free from the plastic tabs. Unfortunately the tabs may break so if you plan to reuse the faces again, they may need to be glued down. DO NOT remove the gas and temp metal faces. The gauges will just be taped over them.



4. Use some tape and apply it to the back of the gauge face. Do so for all the gauges. You may wish to use double sided tape or even glue. Whatever works the best to secure them down especially for the gas and temp faces which has a stronger tendency to lift up at the needle base end. Use the vinyl provided to cover up the stock faces.



5. Drill or notch a small hole on the right side of the front cover to run out the gauge wiring.



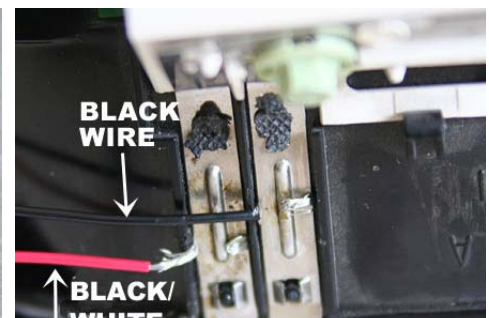
6. Do the same for the left side.



7. Stick the faces and needles on. Feed the wires through the side holes and careful check that they don't interfere with the other bulbs. Put the cover back on. Screw everything down at the back of the cluster as before in step 1. You may need to calibrate the needles again upon driving.



8. To power up the gauges, the inverter needs a 12V source (black/white stripe) and a ground (black). There are 12V lines in the headlight switch which you can determine using a test light. Another way is to tap the wires to the cluster itself. First expose a long piece of wire and double it back by twisting them together so you have a thick exposed wire. We want a thicker wire to wedge it better in the next step.



9. Lift up the two metal pegs on top of the cluster and place the exposed ends under them. Fold one end of the wire over the clip like as shown. Have the wires staggered so that they do not touch each other. You may want to put some electrical tape over each metal clip. Push the clips back down to secure the wires. Reinstall the cluster into the dash and find a secure spot for the inverter.

Disclaimer: By installing the gauges, the installer is acknowledging that they are responsible for any possible damages that may occur to the vehicle in part or in whole. The installer acknowledge that Dub Design Industries or any DDI authorized dealer is not held liable to any possible damages.

Installation documents in full colour can be downloaded by visiting www.dubdesignindustries.com/download-ddi.php