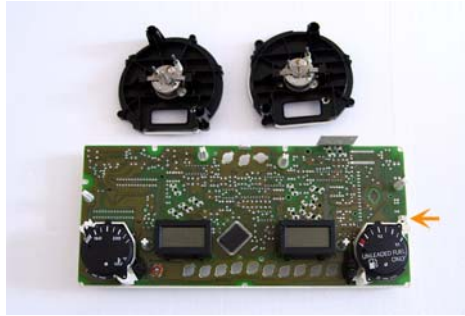
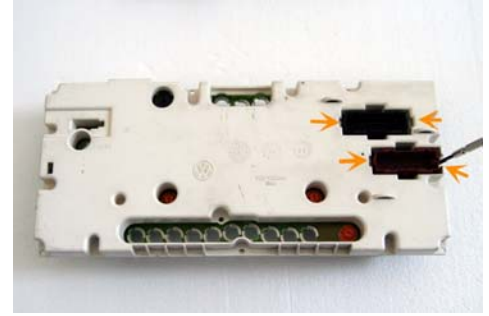


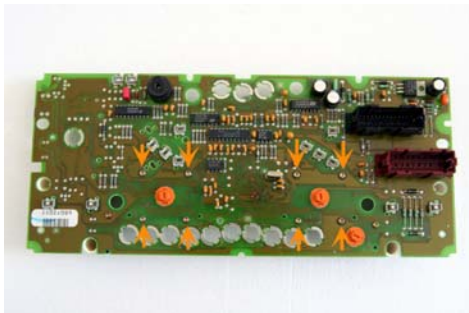
1. With the cluster removed from the dash, separate the front cover by removing the golden coloured screws at the back of the cluster as indicated by the arrows. The front cover can be now removed. Next the circuit board must be removed. To do this, turn the bulbs (circled) so that the notch is in the vertical position.



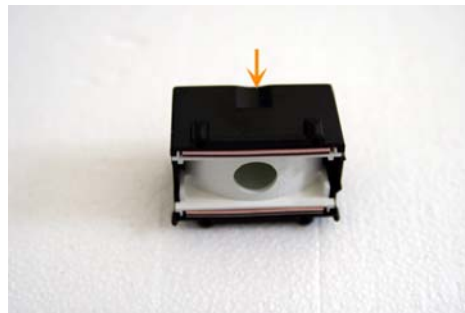
2. To remove the LCD housings from the circuit board, first pull off the speedometer and tachometer units. They just pull straight up and out. There is a clip on the right side indicated by the arrow which holds down the circuit board. Push it to the side and pop this end of the board up to free it from the clip.



3. Flip the cluster over. Use a small screw driver to push the tabs which are on the two harness connectors to the side so the circuit board is freed from the back cover. Push the harness connectors forward. This should enable the circuit board to be separated.



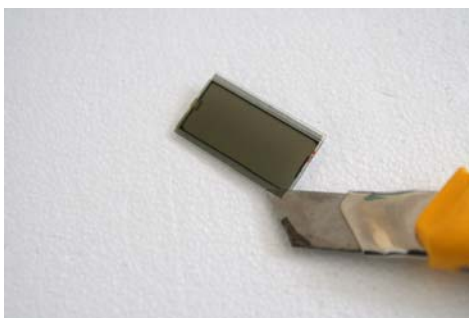
4. At the back of the board, there are 4 torx screws which hold each of the LCD housing to the board. Remove them with a number T8 bit torx.



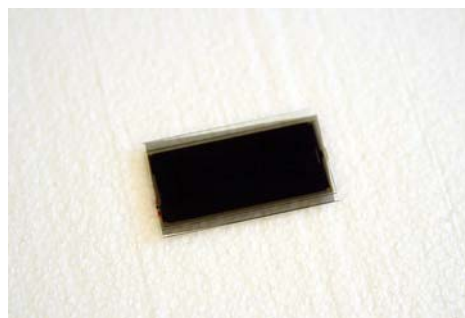
5. Here is the LCD housing. Notice the orientation of the housing. The notch is on the top side.



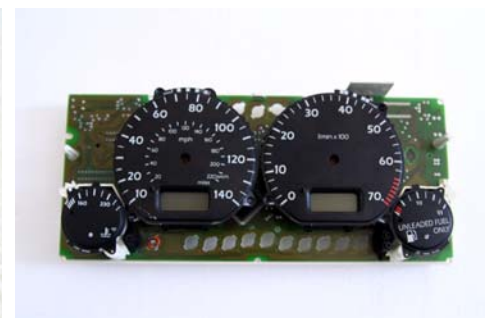
6. Slide out the parts inside the housing. It's important to take note of which end is up or the LCD glass may be put back upside down. You may want to mark the up edge with a pencil as shown in the picture. Erase the mark later. Replace the green filter with the provided red filters. Stack two of them together. They may need to be trimmed to fit better.



7. Using a sharp cutting knife or razor, pry an edge on the film that is in front of the LCD glass. Pull it carefully off with your finger the rest of the way. The glass is fragile and can break so don't put too much pressure on it.



8. Apply the new LCD polarizer film by peeling off the plastic film on the adhesive side. Apply the film to the glass by starting at one end and smooth the film down with your thumb or finger to work out trapped air bubbles. Do it slowly from one edge working your way to the other edge. The glass should now appear much darker. Peel off the protective plastic film on the front of the polarizing film.



9. Now reinstall the LCD housing by putting every back in the reverse step and noting the orientation of the LCD glass.